

# PRIMARY 6 DSA & PSLE ENGAGEMENT TALK



1	Term 3 Updates
2	DSA MATTERS
3	PSLE MATTERS
4	Q & A





**Thank you for the partnership!**

# P6 Revision Guide

- To instill self-discipline to help your child plan and pace his/her revision
- To provide structure and direction



MONDAY		TUESDAY		WEDNESDAY		THURSDAY		FRIDAY		SATURDAY			
1	Vesak Day Holiday	1	MT: Reading Aloud (SLS) MA: ALS (SLS) 20 Qn EL: PSLE Paper 2023 (Booklet A) Sci: 5 MCQ (mcq.sg)	2	MT: 5 MCQ (SLS/Booklet) MA: ALS (SLS) 20 Qn EL: PSLE Paper 2023 (Booklet B) Sci: 5 MCQ (mcq.sg)	3	MT: 5 MCQ (SLS/Booklet) MA: ALS (SLS) 20 Qn EL: PSLE Paper 2023 (Booklet B) Sci: 5 MCQ (mcq.sg)	4	MT: 5 LC MCQ (SLS) MA: ALS (SLS) 20 Qn EL: PSLE Paper 2023 (Booklet B) Sci: 5 MCQ (mcq.sg)	5	MT: 5 MCQ (SLS/Booklet) MA: ALS (SLS) 20 Qn EL: Read EL Paper 1 Study Sci: 5 MCQ (mcq.sg)	6	
7	MT: Reading Aloud (SLS) MA: ALS (SLS) 20 Qn EL: PSLE Paper 2023 SW Sci: revise the upper block revision booklet	8	MT: 5 MCQ (SLS/Booklet) MA: ALS (SLS) 20 Qn EL: PSLE Paper 2023 SW Sci: 5 MCQ (mcq.sg)	9	MT: 5 MCQ (SLS/Booklet) MA: ALS (SLS) 20 Qn EL: PSLE Paper 2023 (Combo) Sci: 5 MCQ (mcq.sg)	10	MT: 5 MCQ (SLS/Booklet) MA: ALS (SLS) 20 Qn EL: PSLE Paper 2023 (Combo) Sci: 5 MCQ (mcq.sg)	11	MT: 5 LC MCQ (SLS) MA: ALS (SLS) 20 Qn EL: PSLE Paper 2023 (Combo) Sci: 5 MCQ (mcq.sg)	12	MT: 5 MCQ (SLS/Booklet) MA: ALS (SLS) 20 Qn EL: Read EL Paper 1 Study Sci: 5 MCQ (mcq.sg)	13	
4	MT: Reading Aloud (SLS) MA: ALS (SLS) 20 Qn EL: SLS Prelim Paper Practice 1 Sci: revise the upper block revision booklet	15	MT: 5 MCQ (SLS/Booklet) MA: ALS (SLS) 20 Qn EL: SLS Prelim Paper Practice 1 Sci: 5 MCQ (mcq.sg)	16	MT: 5 MCQ (SLS/Booklet) MA: ALS (SLS) 20 Qn EL: SLS Prelim Paper Practice 1 Sci: 5 MCQ (mcq.sg)	17	MT: 5 MCQ (SLS/Booklet) MA: ALS (SLS) 20 Qn EL: SLS Prelim Paper Practice 1 Sci: 5 MCQ (mcq.sg)	18	MT: 5 LC MCQ (SLS) MA: ALS (SLS) 20 Qn EL: SLS Prelim Paper Practice 1 Sci: 5 MCQ (mcq.sg)	19	MT: 5 MCQ (SLS/Booklet) MA: ALS (SLS) 20 Qn EL: Read EL Paper 2 Study Sci: 5 MCQ (mcq.sg)	20	
1	MT: Reading Aloud (SLS) MA: ALS (SLS) 20 Qn EL: Vocab Booklet Sci: Hevise the upper block revision booklet	22	MT: 5 MCQ (SLS/Booklet) MA: ALS (SLS) 20 Qn EL: Vocab Booklet Sci: 5 MCQ (mcq.sg)	23	MT: 5 MCQ (SLS/Booklet) MA: ALS (SLS) 20 Qn EL: Vocab Booklet Sci: 5 MCQ (mcq.sg)	24	MT: 5 MCQ (SLS/Booklet) MA: ALS (SLS) 20 Qn EL: Vocab Booklet Sci: 5 MCQ (mcq.sg)	25	MT: 5 LC MCQ (SLS) MA: ALS (SLS) 20 Qn EL: Vocab Booklet Sci: 5 MCQ (mcq.sg)	26	MT: 5 MCQ (SLS/Booklet) MA: ALS (SLS) 20 Qn EL: Read EL Sci: 5 MCQ (mcq.sg)	27	
3	MT: Reading Aloud (SLS) MA: ALS (SLS) 20 Qn EL: Spelling Sci: Hevise the upper block revision booklet	29	MT: 5 MCQ (SLS/Booklet) MA: ALS (SLS) 20 Qn EL: Spelling Sci: 5 MCQ (mcq.sg)	30		1		2		3		4	



# Term 3 Monday After School Support

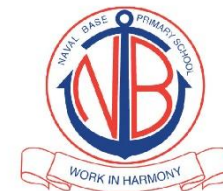
## Current Situation (Still continuing)

- Remedials on Tuesdays & Thursdays
- Math Support on Wednesday & Friday for identified students

## Enhanced Support

- CCA stand down for P6s
- Compulsory remediation for identified students (AL7/8)
- Consultation for identified students scoring (AL4-6)
- Optional consultation (AL1-3)





# Term 3 Monday After Sch Support

	Session 1: 2-3pm		Session 2 3-4pm	
Date	Remedial	Consultation	Remedial	Consultation
13 July	FMA & SMA AL7/8	Subjects (AL4-6) & Optional Consultation (AL 1-3)	EL, SCI & MT (AL7/8)	Subjects (AL4-6) & Optional Consultation (AL1-3)
20 July				
27 July				
3 August				
31 August				

More details will be sent via PG.

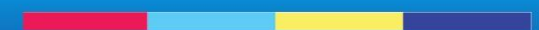




# Direct Schools Admission (DSA)



[www.moe.gov.sg/dsa-sec](http://www.moe.gov.sg/dsa-sec)





# Direct Schools Admission

Application for DSA-Sec is to be submitted through MOE's online DSA-Sec Portal. The application is free-of-charge and will be open from **May to Jun 2026 (tentative)**.

Application may either be made on their own, or through the school.

For more information, visit [www.moe.gov.sg/dsa-sec](http://www.moe.gov.sg/dsa-sec).



# Direct Schools Admission

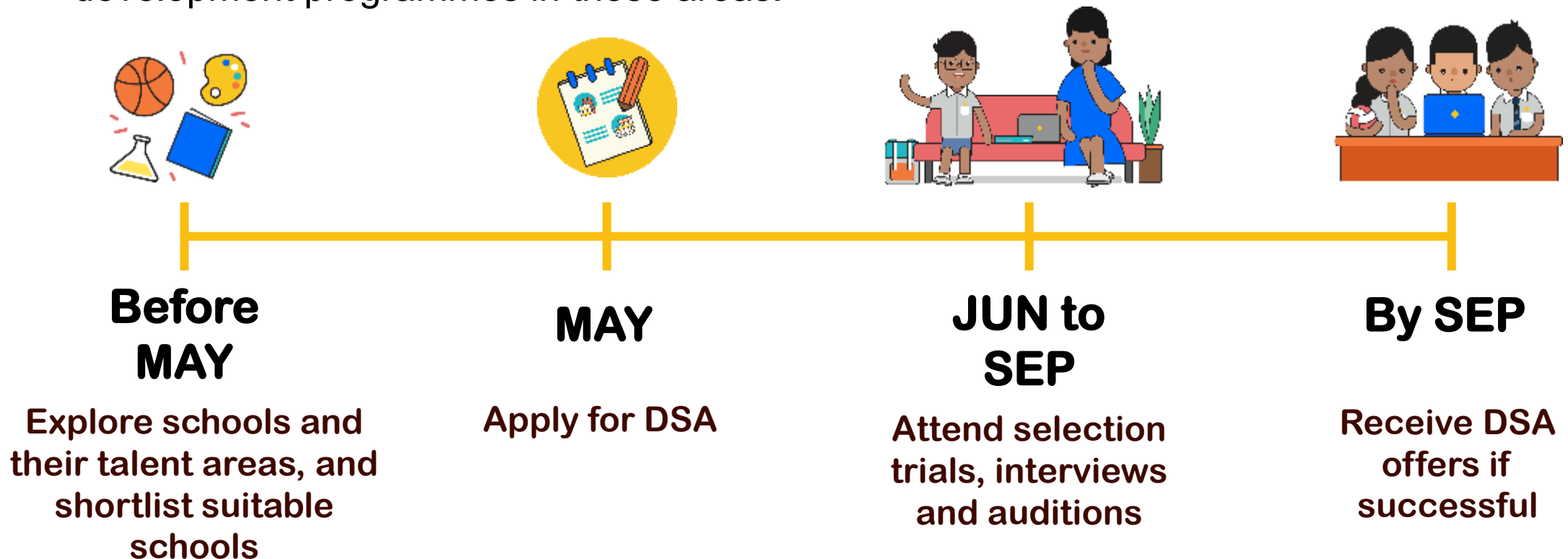
Students apply based on their talent in sports, CCAs and specific academic areas.

- Sports and games
- Visual, literary and performing arts
- Debate and public speaking
- Science, mathematics and engineering
- Languages and humanities
- Uniformed groups
- Leadership (for example, prefects)



# ENTERING SCHOOLS THROUGH DSA-SEC

- There is no change to the application and selection process with the shift to Full SBB.
- If your child has specific talents and strengths beyond the PSLE (e.g. areas such as sports, performing arts and leadership), consider the **Direct School Admission-Secondary (DSA-Sec)** as an alternative admission pathway to access secondary schools that have talent development programmes in these areas.



# Important Note

Your child's PSLE score still matters.  
Students offered placement in a DSA-Sec school still need a PSLE score that qualifies them for the Posting Group offered by the school.





# DSA-Sec : A Commitment

If a student is admitted to a secondary school through DSA-Sec, the student is not allowed to:

- Participate in the annual S1 Posting to opt for secondary schools
- Required to honour the commitment to the allocated DSA-Sec School for the entire duration of the programme.
- Transfer to another school **AFTER** the release of the PSLE results.

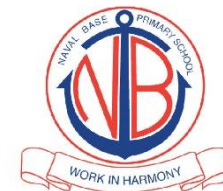


# Key Dates for 2026 DSA-Sec

Dates	Action
6 May [11 a.m.] - 2 Jun [4.30 p.m.]	<u><a href="#">Application</a></u> Apply for DSA-Sec through <u><a href="#">DSA-Sec Portal</a></u>
30 Jun – 28 Aug	<u><a href="#">Selection</a></u> Different schools have different selection processes. If shortlisted, you have to attend interviews, auditions or trials conducted by DSA schools.
19 – 23 Oct [9 a.m. to 4.30 p.m.]	<u><a href="#">School Preference Submission (SPS)</a></u> Select Preferred Schools : Choose up to 3 school choices in order of preference using the DSA-Sec Portal
24 or 25 Nov	<u><a href="#">DSA Allocation Results</a></u> Receive School Allocation Results You will know whether you have been allocated to a school through the DSA-Sec, at the same time you receive your PSLE results.

**CLOSING SOON**

# Application



## a) Accessing the DSA-Sec Portal

- Applications will be centralised across all participating secondary schools
- Parents may log-in directly to DSA-Sec Portal. Use SINGPASS.

## b) Choices

- can indicate up to 3 choices (maximum of 2 choices for the same school under 2 different talent areas.)

## c) Information to provide

- valid email address and local mobile number
- optional to indicate non-school-based activities and achievements.

**(no need for testimonials to be provided for the application)**



## Which DSA-Sec school should my child apply to?



Find a suitable school to help your child enjoy learning at an appropriate pace and benefit from the school's programmes.

Visit MOE's SchoolFinder at [www.go.gov.sg/schfinder-sec](http://www.go.gov.sg/schfinder-sec) and the secondary schools' websites for more details.

## What do I need to do after application?

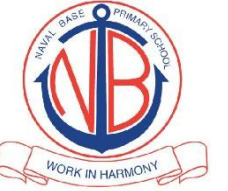
Refer to the respective school website for more details on the timeline, selection process and criteria from 5 May 2026 onwards. The school(s) will contact you if your child is shortlisted.

# Selection



- Secondary schools will inform students of the outcome :
  - Confirmed Offer (CO)
  - Wait List (WL)
  - Unsuccessful
- Students who are given a CO are guaranteed a place in the school, if they accept the offer and qualify for the Posting Group offered by the school based on their PSLE results





# School Preference Submission

- Students who receive at least 1 DSA-Sec offer (incl SOTA) will receive email notification and SMS in mid Oct)
- Both parents are required to log in to the DSA-Sec Portal using their Singpass to submit up to 3 school preferences.
- If parents unable to submit online, they can approach primary school for assistance.
- Late submission, amendments or withdrawals will **NOT** be allowed after the closure of School Preference Submission





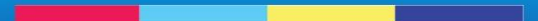
# Allocation Results Release

- Students will receive the DSA-Sec allocation results via the S1 Option Form together with the PSLE results by late Nov 2026.
- **Successful DSA-Sec Students**
  - are **NOT** allowed to participate in the S1 Posting.
  - If eligible for 3<sup>rd</sup> language and/or Posting Group options, you may submit your options during the School Choice Submission period via the S1 Posting Portal
- **Unsuccessful DSA-Sec Students**
  - need to participate in the S1 Posting to submit school choices





# Primary School Leaving Examination (PSLE) and S1 Posting

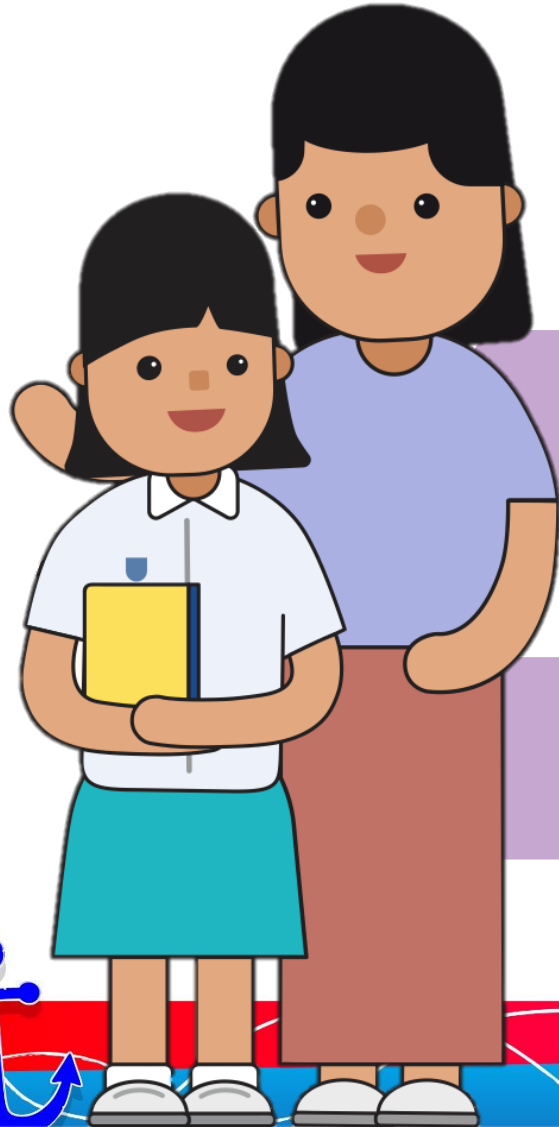


# Objectives of Today's Session :

- A better understanding of the support that your child may need in the transition journey from primary to secondary school
- Understanding Full Subject-Based Banding (Full SBB)
- Information on what to expect in secondary school



# Sharing About PSLE Matters



How does the PSLE Scoring & S1 Posting work?

How are students posted to secondary schools?



# WHAT IS THE INTENT OF THE PSLE?



**A useful checkpoint at the end of primary school**

**A fair way to determine secondary school posting**



Over the years, we have been changing the education system to help our students discover and develop their strengths, interests, abilities and talents while moving away from an over-emphasis on academic results. Our PSLE Scoring system reduces the over-emphasis on academic results by:

1

**Reducing fine differentiation of students' examination results at a young age.**

2

**Recognising a student's level of achievement, regardless of how his/her peers have done.**

3

**Encouraging families to choose secondary schools holistically based on students' strengths, interests and learning needs.**

# WHAT ARE ACHIEVEMENT LEVELS (AL)?

## WHY ARE THE BANDS UNEVEN?

- Students with similar scores in each subject are grouped into scoring bands measured in 8 ALs.
- AL bands and mark ranges are set based on the learning objectives of the curriculum, and mirror the way we learn.

**When we learn something new, after some initial practice, we often find ourselves improving significantly.**


**As we get better, the improvements become small steps, and finally, as we reach a high level, we inch just a little further, even after much learning and practice.**

**The ALs were designed to reflect this reality of learning. They help educators, students, and parents know how ready students are to access the curriculum at the next level.**

<b>AL</b>	<b>RAW MARK RANGE</b>
<b>1</b>	<b>≥ 90</b>
<b>2</b>	<b>85 – 89</b>
<b>3</b>	<b>80 – 84</b>
<b>4</b>	<b>75 – 79</b>
<b>5</b>	<b>65 – 74</b>
<b>6</b>	<b>45 – 64</b>
<b>7</b>	<b>20 – 44</b>
<b>8</b>	<b>&lt; 20</b>

# HOW DOES THE PSLE SCORING SYSTEM WORK?

- The overall PSLE Score is made up of 4 subject Achievement Levels (ALs).
- The PSLE Score can range from 4 to 32, with 4 being the best.



**Elena** PSLE Score **14**

PSLE Subject	AL Score
English	2
Math	2
Foundation Science	AL A = 6
Mother Tongue Language	4

# GRADING OF FOUNDATION SUBJECT GRADES

- Foundation subject grades are graded in scoring bands from **AL A to C**.
- To derive a student's overall PSLE Score for S1 Posting, AL A to AL C for Foundation level subjects are **mapped to AL 6 to AL 8 of Standard level subjects respectively**.
- This mapping is based on the learning and assessment load of the subjects, and informs students of how ready they are for the curriculum in secondary school.

FOUNDATION LEVEL AL	FOUNDATION RAW MARK RANGE	EQUIVALENT STANDARD LEVEL AL
A	75 – 100	6
B	30 – 74	7
C	< 30	8

# HOW DOES THE S1 POSTING WORK?

- Your child has **six choices** in selecting their secondary schools.
- Your child will be posted to a secondary school based on **academic merit, i.e., PSLE Score,** and their **choice order of schools.**
- If two or more students with the same PSLE Score vie for the last remaining place(s) in a school, the following tie-breakers are used in the following order:
  1. **CITIZENSHIP**
  2. **CHOICE ORDER OF SCHOOLS**
  3. **COMPUTERISED BALLOTING**
- The tie-breaker based on school choice order recognises the different considerations that families have in making school choices.



# Tie-breakers

## in the new S1 Posting System


Tie-breakers are used only if there are two or more students with the same PSLE Score vying for the last available place(s) in a school.

Here's a simplified example.

5 students are vying for the last places in the schools of their choice.


**Jane**  
Singapore Citizen  
16 pts

SCHOOL CHOICES:  
1) Sch A  
2) Sch ...  
3) Sch ...  
4) Sch ...




**Bryan**  
Singapore Citizen  
20 pts

SCHOOL CHOICES:  
1) Sch B  
2) Sch ...  
3) Sch ...  
4) Sch ...




**Mary**  
Singapore Citizen  
20 pts

SCHOOL CHOICES:  
1) Sch A  
2) Sch B  
3) Sch C  
4) Sch ...




**Alan**  
Permanent Resident  
20 pts

SCHOOL CHOICES:  
1) Sch A  
2) Sch B  
3) Sch D  
4) Sch ...



**Rina**  
Permanent Resident  
20 pts

SCHOOL CHOICES:  
1) Sch A  
2) Sch B  
3) Sch D  
4) Sch E



➤ Students with better scores will be posted first

Jane has a better PSLE score. She will be posted first, to **School A**.



Bryan, Mary, Alan and Rina have the same score.

As Jane has taken the last available place in School A, Bryan, Mary, Alan and Rina will vie for the last available place in their next choice, **School B**.

➤ Tie-breaker #1: Citizenship

Bryan and Mary are Singapore Citizens. They will have priority to enter **School B**.



Alan and Rina will be tie-broken out as they are Permanent Residents. They will be considered for their next choice, **School D**.

➤ Tie-breaker #2: Choice order of schools

Because Bryan ranked School B higher than Mary, he will be posted to **School B**.



Since Bryan has taken the last place in School B, Mary will be posted to **School C**.



Alan and Rina have both ranked School D as their third choice. They will go through computerised balloting to vie for the last remaining place in **School D**.

➤ Tie-breaker #3: Computerised balloting

Through computerised balloting, Alan is posted to **School D**.



Since Alan has taken the last place in School D, Rina will be posted to her fourth choice, **School E**.



# HCL POSTING ADVANTAGE TO SAP SCHOOLS

Students who obtained a Distinction/Merit/Pass for HCL at the PSLE and an overall PSLE Score of 14 or better will receive a posting advantage when applying to SAP schools.

Students will be considered for admission to SAP schools in the following order:

1st



7

NO HCL

Students with better PSLE Scores will be posted first, even if they did not take HCL

2nd



8

DISTINCTION

3rd



8

MERIT

4th



8

PASS

Amongst students with the same PSLE Score, those with better HCL grades will be posted first

5th



8

NO HCL

6th



9

DISTINCTION

- Students' HCL results are denoted as 'D' (Distinction), 'M' (Merit) or 'P' (Pass).
- Students who obtain (i) a Distinction / Merit / Pass in HCL and (ii) a PSLE Score of 14 or better are eligible for posting advantage to SAP schools.
- Students are ranked taking into account their performance in HCL.
- This posting advantage applies before the tie-breakers for S1 Posting.



# Understanding Full Subject-Based Banding (Full SBB)



**What is Full SBB?**



Joy Of Learning begins at Naval Base Primary School!



# WHAT IS FULL SBB?

- Full SBB will be implemented in secondary schools from 2024, and aims for students to:



Have greater ownership of their learning according to their strengths, interests, abilities, talents and learning needs.



Develop a growth mindset and an intrinsic motivation to learn for life.



Have more opportunities to interact with friends of different strengths, interests, abilities and talents.



Have more options for post-sec pathways, while ensuring they have strong fundamentals and can thrive in their chosen pathway.

# FULL SUBJECT-BASED BANDING (FULL SBB)



**2020**

- Full SBB pilot commenced in 28 secondary schools.
- The initial feedback from pilot schools has been positive.

Progressive  
rollout of  
Full SBB

**2022-2023**

- Around 90 schools have implemented aspects of Full SBB by 2023.



**2024**

- Remaining schools that admit students from 3 streams will be implementing Full SBB.
- Express, N(A) and N(T) streams will be removed for the 2024 S1 cohort onwards.
- Students will be grouped in mixed form classes in lower secondary.



**2027**

- From 2027, students will sit for the Singapore-Cambridge Secondary Education Certificate (SEC) examinations, instead of the GCE N- and O- Level examinations.
- Students will receive an SEC which reflects the subjects and subject levels that they offered.

# FULL SUBJECT-BASED BANDING (FULL SBB)

## Secondary school experience under Full SBB

- **Mixed form classes** and **common curriculum subjects** at **Lower Secondary**.
- **Subjects to be offered at G1, G2 or G3**, mapped from the standards of the N(T), N(A) and Express subject levels respectively.
- **Greater flexibility** to customise students' learning by offering subjects at various subject levels.
- **Shift away from stream-based subject offerings.**

After PSLE

Start of Sec

End of Sec

Post Sec

From 2023:  
Entry to S1  
through 1 of 3  
Posting Groups

From 2027:  
Singapore-Cambridge  
Secondary Education  
Certificate (SEC)  
examination

Updated post-  
secondary admission  
criteria

# FULL SBB: S1 POSTING

## Three Posting Groups to ensure schools are accessible to diverse learners

From the 2024 S1 cohort, MOE will facilitate the admission of P6 students into S1 through 3 Posting Groups: **Posting Group 1, 2 and 3.**

Objective: Ensures that schools continue to admit a **diverse profile of students** and students have **access to a wide range of schools.**

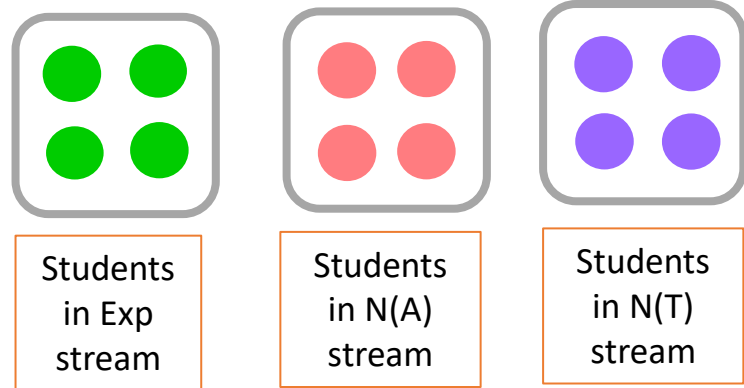
**Unlike the academic streams of Express, N(A) and N(T), Posting Groups will only be used for the purposes of facilitating entry into secondary school and to guide the subject levels students offer at the start of S1.**

- Posting Groups assigned based on PSLE Scores, mapped from existing PSLE Score ranges for Express, N(A) and N(T) streams.
- PSLE Scores provide a good gauge of the subject levels that students can offer at the beginning of S1.

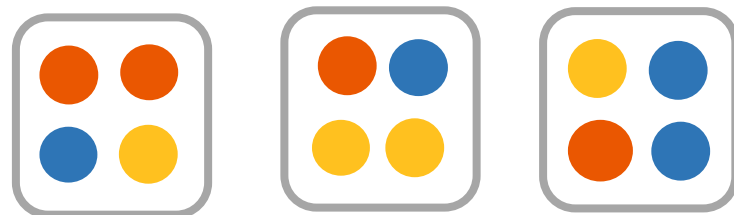
PSLE Score	Posting Group	Subject level for most subjects
4 – 20	3	G3
21 and 22	2 or 3	G2 or G3
23 and 24	2	G2
25	1 or 2	G1 or G2
26 – 30 <i>(with AL 7 in EL and MA)</i>	1	G1

# FULL SBB: MIXED FORM CLASSES IN LOWER SECONDARY

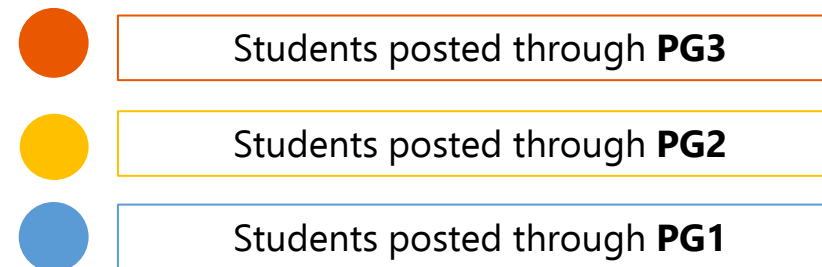
Form classes arranged by academic stream in schools yet to implement Full SBB



With Full SBB:  
Mixed form classes



- Under Full SBB, students will be placed in mixed form classes in Lower Secondary to ensure a **mix of learner profiles**.
  - Provides students with **more opportunities** to interact with other students of different strengths and interests.
  - Enables students to **build meaningful friendships and learn to value different perspectives**.



# FULL SBB: COMMON CURRICULUM

## Common Curriculum Subjects taken in mixed form classes (~1/3 curriculum time)

### Examinable Subjects:

- Art
- Design & Technology (D&T)
- Food & Consumer Education (FCE)

### Non-examinable Subjects:

- Character & Citizenship Education (CCE)
- Music
- Physical Education (PE)

- The six common curriculum subjects would each have a single syllabus for all students at Lower Secondary levels.
  - These subjects will be taught and assessed at a common level that is accessible to all students.
  - Teachers will adopt a range of approaches to cater to the different learning needs of their students.
- For other subjects, students attend classes with others taking the subject at the same subject level.

# OFFERING SUBJECTS AT A MORE DEMANDING LEVEL AT THE START OF SEC 1

- Students posted to schools through PG1 and PG2 can offer **English Language, Mother Tongue Languages, Mathematics and Science** at a more demanding level based on their PSLE AL for each subject.

FOR STUDENTS POSTED TO SCHOOLS THROUGH PG1 AND PG2			
SUBJECT	PSLE SUBJECT LEVEL	PSLE AL FOR SPECIFIC SUBJECT	OPTION TO TAKE THE S1 SUBJECT AT :
<ul style="list-style-type: none"> <li>• English Language</li> <li>• Mother Tongue Language</li> <li>• Mathematics</li> <li>• Science</li> </ul>	Standard	AL 5 or better	G3 or G2
		AL 6	G2
	Foundation	AL A	G2

# OFFERING SUBJECTS AT A LESS DEMANDING LEVEL AT THE START OF S1

- For students who offered **English Language, Mathematics and/or Science** at Foundation level at PSLE, but are otherwise eligible to take most of their subjects at G3 when entering secondary school, they may choose to take these subjects at a less demanding level (LDL; i.e., G2), in consultation with their secondary schools.
- Students have the option to offer **Mother Tongue Languages (MTL)** at LDL based on their PSLE Achievement Level (AL) for the subject:

POSTING GROUP (PG)	PSLE AL FOR MTL <sup>^</sup>	OPTION TO OFFER MTL AT A LESS DEMANDING LEVEL
PG3	AL 6	G2
	AL 7-8	G1 or G2
PG2	AL 7-8	G1

<sup>^</sup> Foundation level AL A to AL C will be mapped to AL 6 to AL 8 of Standard level subjects respectively.

- Students who are eligible to offer MTL at LDL can still choose to offer MTL at-level if they prefer.

# SUBJECT LEVEL FLEXIBILITY BEYOND THE START OF S1

- Beyond the start of Sec 1, students may **adjust their subject levels across their secondary school journey**.
  - Students may offer subjects, including English Language, Mother Tongue Languages, Mathematics, Science and Humanities subjects at a **more demanding level** if they meet the criteria and based on the school's holistic considerations.
  - Students who are not coping well may **offer subjects at a less demanding level**, based on their school-based performance and school's holistic considerations, to calibrate their curricular load.
  - In upper secondary, students may offer elective subjects (for example, Additional Mathematics, Art, Design & Technology) at a subject level suited to their strengths, interests and post-secondary aspirations, to **allow them to pursue their interests without adding unduly to their overall curriculum load**.
- Schools will consider **students' learning progress and developmental needs** when helping them determine their subject choices.

# Choosing Suitable Secondary Schools




Factors to Consider

Preparing for S1 Posting Exercise



# PSLE SCORE RANGES FOR ALL SECONDARY SCHOOLS

- Use the PSLE Score ranges as a reference alongside other important factors, such as the school's distinctive programmes, Co-Curricular Activities (CCA), culture, ethos, and proximity to home when shortlisting school choices that would best fit a student's educational needs.
- The PSLE Score ranges for individual secondary schools will be available for your reference on <https://moe.gov.sg/schoolfinder> and <https://go.gov.sg/exploreschools>. They reflect the PSLE scores of the students posted into these schools at the previous year's S1 Posting Exercise.
- A school's PSLE Score range (including Cut-Off-Point) for a particular year is not pre-determined before the posting, and vary from year to year, depending on the cohort's PSLE results and their school choices in that year's S1 Posting Exercise.

SchoolFinder Tool	MySkillsFuture Student Portal (Primary)
  <a href="https://www.moe.gov.sg/schoolfinder">https://www.moe.gov.sg/schoolfinder</a>	 <a href="https://go.gov.sg/exploreschools">https://go.gov.sg/exploreschools</a>

# HOW DO WE INTERPRET THE PSLE SCORE RANGES?

The PSLE Score range refers to the PSLE Score of the first and last student admitted to a particular school in the previous year via the S1 Posting Exercise. This shows the range of student profiles who enter each school.

## Example

XX Secondary School

PSLE Score range of 20XX (previous year's S1 Posting Exercise)

Posting Group 3	15 – 20
Posting Group 2	21 – 24
Posting Group 1	25 – 28

PSLE Score of the first student posted into the school in the respective PG.

PSLE Score of the last student posted into the school in the respective PGs [i.e., the school's **Cut-Off Point (COP)**].

*Note: Posting Groups will be assigned based on PSLE Scores, mapped from existing PSLE Score ranges for Express, N(A) and N(T) streams.*

# EXAMPLE OF AN SAP SCHOOL'S PSLE SCORE RANGE

While students need not take HCL to enter SAP schools, students who pass HCL receive a posting advantage for admission. To reflect this, the PSLE Score ranges of SAP schools include the HCL grades of the first and last student admitted in the previous year via S1 Posting.

## Example

XX Secondary School

PSLE Score range of 20XX (previous year's S1 Posting Exercise)

Posting Group 3	5 (D) – 12 (P)
Posting Group 2	
Posting Group 1	

PSLE Score and HCL grade of the first student posted into the school through PG3.

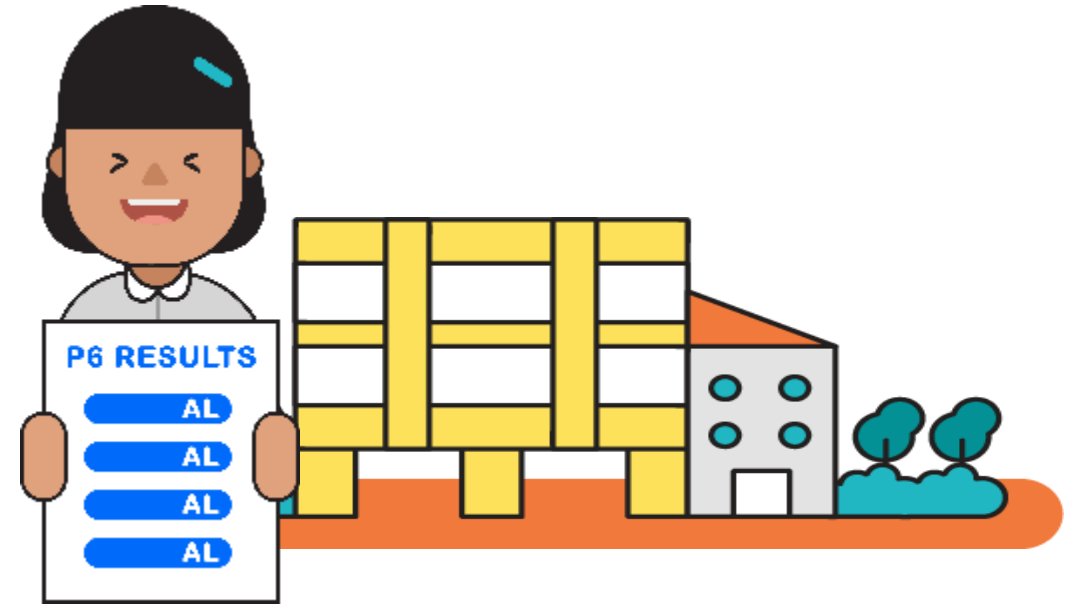
PSLE Score and HCL grade of the last student posted into the school through PG3 [i.e. the school's Cut-Off Point (COP)].

# SCHOOL CHOICE JOURNEY

- The PSLE Score ranges are a **useful starting point** for parents and students to consider secondary schools.
- Use this information, together with other **important factors** such as the secondary schools' distinctive programmes, CCAs, ethos and cultures, to shortlist schools that would best fit the educational needs of the student.



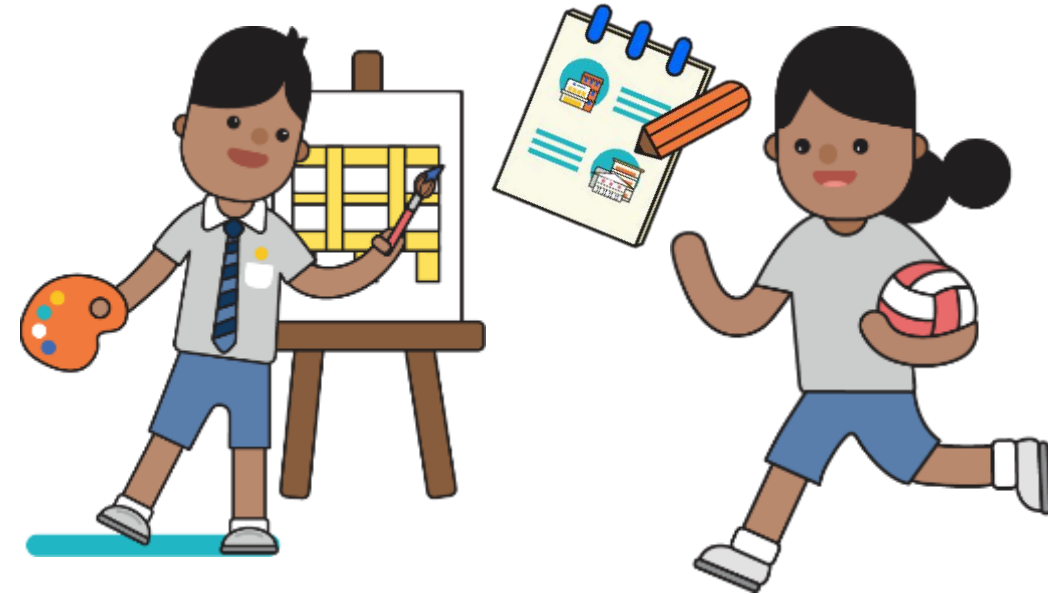
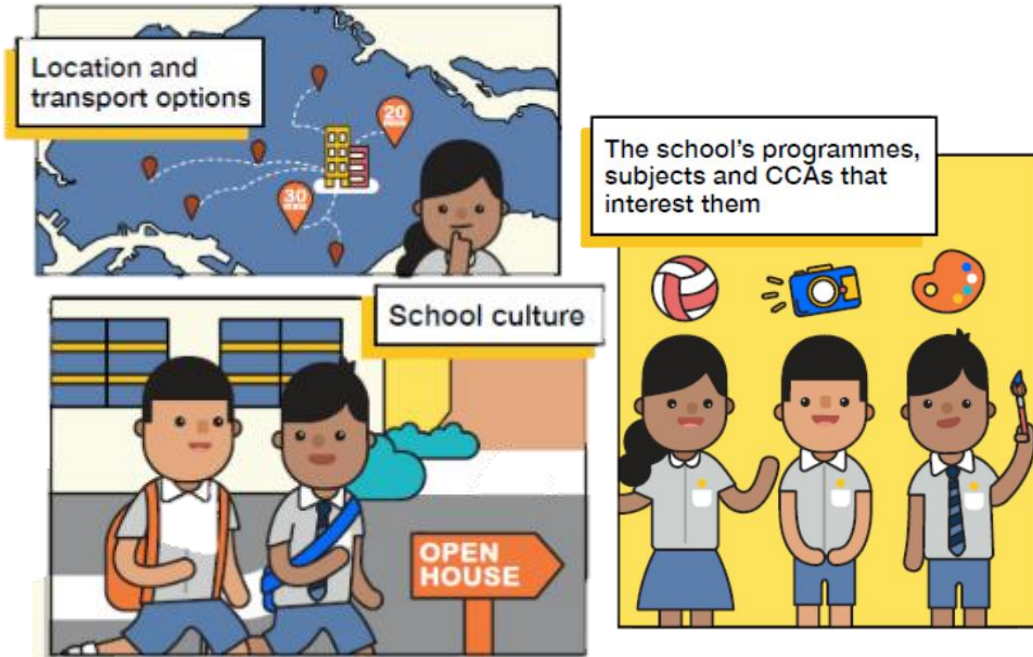
# PREPARING FOR THE S1 POSTING EXERCISE



Use all 6 options with a range of Cut-off Points as this will increase your child's chances of being posted to a school of their choice.

Take reference from schools' PSLE Score ranges, which serve as a guide for you and your child to shortlist school choices. Consider at least 2-3 schools where your child's PSLE Score is better than the school's Cut-off Point.

# PREPARING FOR THE S1 POSTING EXERCISE



Shortlist schools that offer programmes that cater to your child's strengths, interests, abilities, talents and learning needs, as well as provide suitable learning environments.

Rank your child's preferred school higher in the choice order of schools. This will increase your child's chances of being posted to that school, if they need to undergo tie-breaking.

# TIPS FOR PARENTS!

Be open and flexible when discussing your child's preferences, needs and choices.

Manage your own expectations and do not project these expectations onto your child.



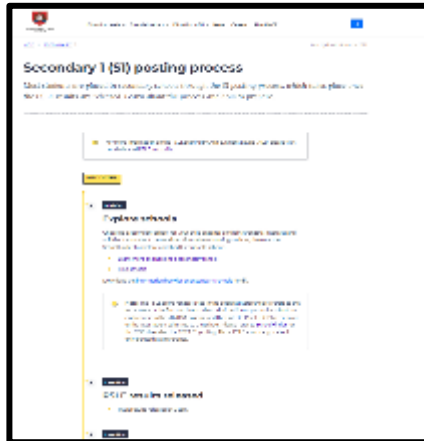
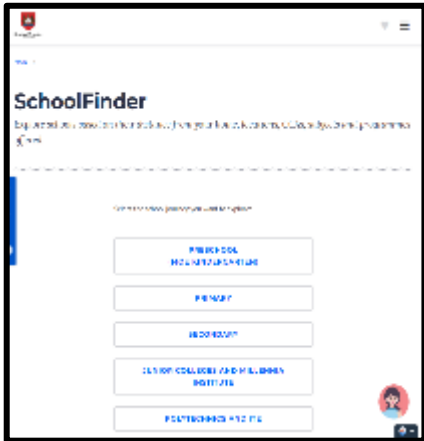
Have regular conversations with your child to understand more about his/her strengths, interests, abilities, talents and aspirations.


Affirm your child and offer support when he/she shares his/her plans with you.

# PREPARING FOR THE S1 POSTING EXERCISE

**SCHOOL  
FINDER**

*My*SKILLS*future*



- Release of **S1 Posting** results 

- Release of **PSLE** results
- Online Submission of **S1 School Choices and Options** 

**OCTOBER**

**NOVEMBER**

**DECEMBER**

# Useful resources

## Quick tips on shortlisting secondary schools

**A SECONDARY SCHOOL THAT'S SUITABLE FOR YOUR CHILD**  
Help them match the school to their strengths and interests.

**ASK:**  
What are their strengths, interests, and abilities?  
- What kind of courses, programmes and opportunities will develop these?  
- Is the pace of learning suitable for them?

**CONSIDER:**  
- School Culture  
- Courses  
- Programmes, Subjects and CCAs Offered  
- Location and Transport  
- If your child has Special Educational Needs  
Select schools with specialised facilities or programmes.

**SUBMIT:**  
- School Options  
So that your child is more likely to get into a school of choice.  
- Schools with Different Cut-Off Points  
Consider all local S-B schools where your child's PSLE Score is better than the school's Cut-Off Point.  
**REFER TO:**  
MOE's SchoolFinder  
Check out schools based on subjects offered, Co-Curricular Activities, location and contact information.

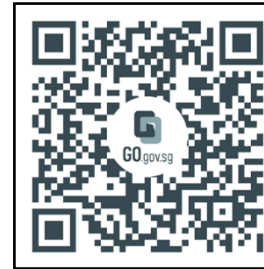
**YOUR RANK OF SCHOOL CHOICES**  
The higher you rank your choices, the better your chance of getting into that school.  
Do note that schools' PSLE Score ranges can vary from year to year, since they depend on each school's performance and intake patterns.

Ministry of Education SINGAPORE

## Tools to use to explore secondary schools

**SCHOOL FINDER**

*My*SKILLS*future*



## How-to-Guides to equip parents on how to use the tools

**How to Use SchoolFinder**  
Ministry of Education SINGAPORE

<https://go.gov.sg/school-finder>



# Useful resources



## Transition Materials

## Resilience Boosters

Supporting your child's transition through **Primary 5/6**

Build a caring home environment to nurture the social and emotional skills of your child using these 5 A.P.P. tips.

**SUPPORT**

- Encourage your child to talk to a trusted adult for support.
- Help your child understand and share new and unfamiliar situations.
- Share information on physical changes during puberty, ensure the change is positive and may encourage it.

**FAMILIARISE**

- Find out what primary 5/6 is like and the routine there.
- Share information on physical changes during puberty, ensure the change is positive and may encourage it.

**Use T.A.D.**

**Talk**

**Ask**

**Quick Tips**

- Children without being embarrassed, be open to their feelings.

Supporting your child's transition through **Secondary School**

Build a caring home environment to nurture the social and emotional skills of your child using these 5 A.P.P. tips.

**SUPPORT**

- Find out how your child's primary school experience is going.
- Make a bank of something to celebrate each day.

**FAMILIARISE**

- Find out what secondary school is like.
- Encourage your child to talk to a trusted adult for support.

**Use T.A.D.**

**Talk**

**Ask**

**Quick Tips**

- Children without being embarrassed, be open to their feelings.



Resilience Boosters

**POSITIVE THINKING**

Record, Rationalize, Replace

**STRESS SYMPTOMS**

- Struggles to pay attention in studies or activities
- Tiredness
- Rebellion
- Excitement
- Sleeping

**SETTING GOALS**

Identify Age-Appropriate Goals with Your Child

**PROBLEM SOLVING**

Use S.O.D.A.S. to guide your child in problem-solving

**Tips for Parents:**

- Help your child use "What-Then-Ask" for learning.
- Review progress with your child.



# FIND OUT MORE ON THE PSLE-FSBB MICROSITE



<https://go.gov.sg/pslefsbb>



# EXPLORE YOUR FULL SBB PATH



<https://go.gov.sg/my-fsbb-path>



# OTHER RESOURCES

SchoolFinder Tool

# SCHOOL FINDER



<https://go.gov.sg/secschoolfinder>

“Welcome to Secondary School” video



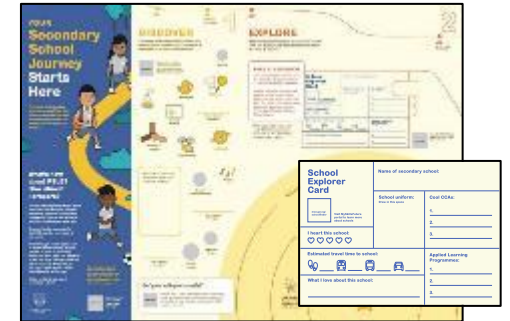
<https://go.gov.sg/welcome-to-secondary-school>

Secondary School Education Booklet



<https://go.gov.sg/psle-sec-sch-brochure>

Student Journey Map and School Explorer Card



<https://go.gov.sg/psle-student-journey>

# OTHER RESOURCES

## ECG Tips For Parents



<https://go.gov.sg/tips-for-parents>

## MySkillsFuture Student Portal (Primary)



<https://go.gov.sg/mysfpri>

## ECG What's Next



<https://go.gov.sg/whats-next-psle>